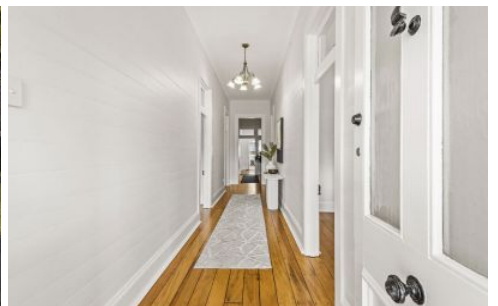


SAMANTHA WILSON

PROPERTY



8 Wharf Street Broadwater NSW

4 2 4

This stylish newly renovated home built in 1884 with loads of local history, is located in a peaceful setting capturing glorious afternoon sunsets overlooking the Richmond river.

Featuring soaring 13-foot ceilings, original polished floorboards, 4 spacious bedrooms, enormous lounge with fireplace, brand new designer kitchen with SMEG appliances, open plan dining and lounge, 2 bathrooms plus study.

Features:

- Master bedroom with ensuite
- 3 spacious bedrooms
- Brand new kitchen with white SMEG 900w oven (5 yr warranty)
- Double Turner Hastings fireclay sink, stone bench tops,

Price : \$ 950,000
Type : House
Building : 221 sqm
Land Size : 1012 sqm
View : <https://www.samanthawilsonproperty.com.au/7977630>



Samantha Wilson
0418 838 676



Scale in metres. Dimensions are approximate. All information contained herein is gathered from sources we believe to be reliable, however we cannot guarantee its accuracy and interested persons should rely on their own enquiries.

